

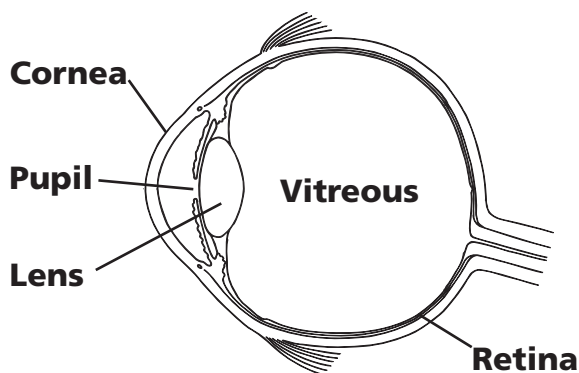
Posterior Vitreous Detachment

Ophthalmology Department
Tel: 01473 703829

Produced by:
The Ipswich Hospital NHS Trust
Heath Road, Ipswich, Suffolk IP4 5PD
Hospital switchboard: 01473 712233
www.ipswichhospital.nhs.uk

Posterior Vitreous Detachment

The vitreous is a transparent jelly-like substance that occupies the space between the lens and the retina (see diagram). It helps transmit rays of light through to the retina.



As we age the vitreous liquifies and degenerates. This process can cause the vitreous to separate from its attachment to the retina. This may result in experiencing flashes of light and/or 'floaters', which may appear as black 'dust' particles in our vision. These can be quite frightening.

'Flashes and floaters' should be investigated. This involves examining the vitreous and retina at the back of the inside of the eye. We put some eye drops into your eye to dilate (widen) the pupil so we can see inside. The drops will temporarily blur your vision. **You are advised not to drive away from your clinic appointment.** If possible someone should accompany you.

A simple vitreous detachment (or separation) is a common consequence of ageing, and requires no treatment. Unfortunately you will be left with some floaters and a 'net curtain' effect. However, sudden showers of new floaters, visual loss or a black shadow or 'curtain' **should always be acted upon. Contact your optometrist without delay.** He or she will refer you to the Eye Clinic if required.