

Strategy Development Framework

May 2018



Overview

- Purpose of the Trust strategy
- Context
- Approach
- Strategy tiers
- Strategy governance
- Timeline



What is the trust strategy for?

- It establishes the framework within which the trust will **deliver the merger objectives**:
 - Improved quality and patient outcomes
 - Better value for money
 - Sustained and improved access to services that meet the needs of the population
 - Sustainable, skilled workforce
- It enables ESNEFT to deliver its vision **to provide the communities we serve with excellent healthcare and build a better future for east Suffolk and north Essex**
- It supports the delivery of the philosophy of **eliminating unnecessary stress** and ensuring that **time matters**
- It informs the **Trust Long Term Financial Plan** and allows the trust to measure the strategic actions towards the ambition of financial sustainability.



Strategy in context - simplified

NHSI/NHSE

- National Policy and strategy
- e.g. 5YFV, Cancer Plan, NHS Constitution standards

STP/ICS

- STP Plan
- Agree local priority programmes implementing national policy

ESNEFT

- Trust Strategy
- Delivered through operational plans and strategic programmes



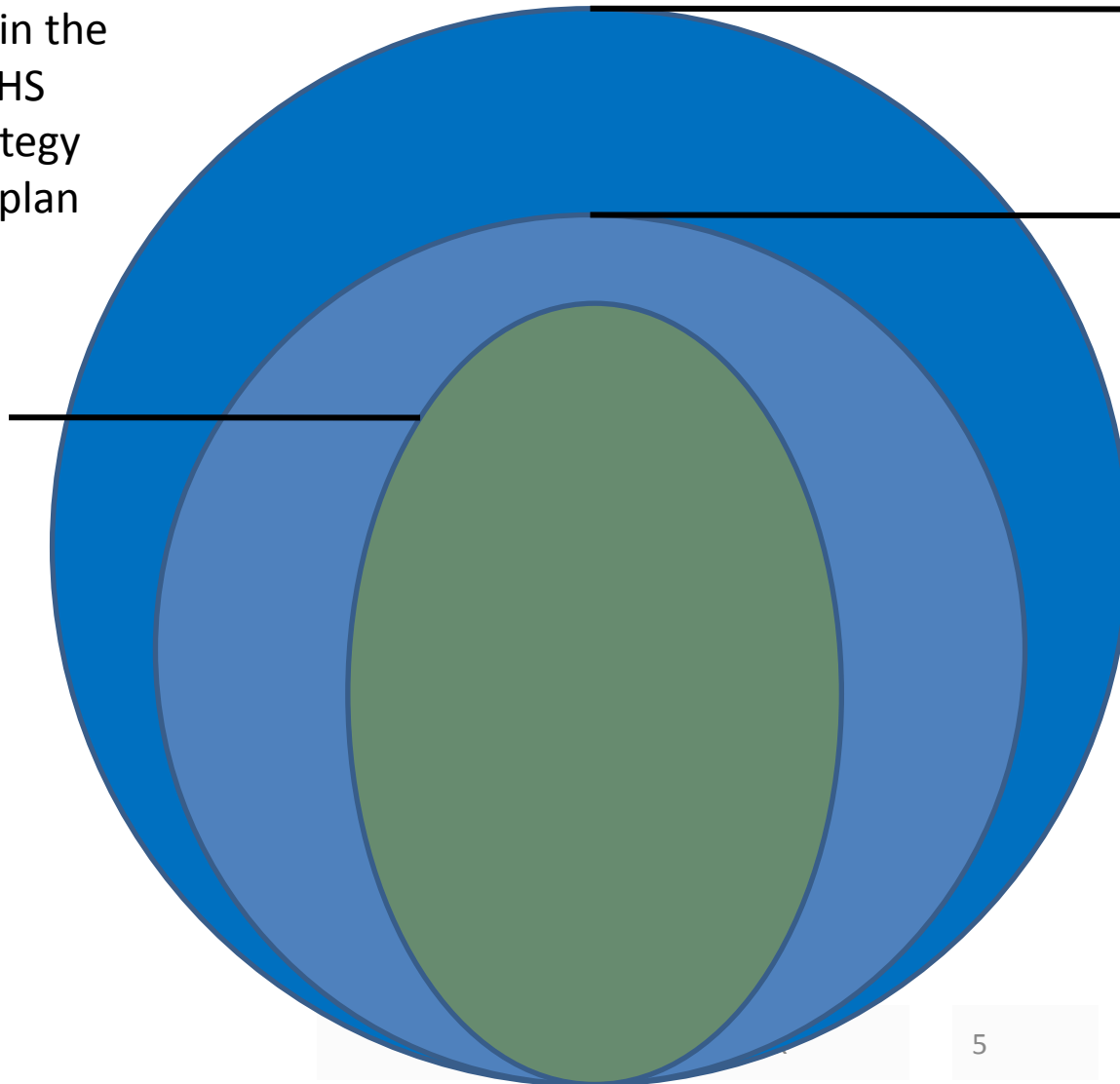
Strategy in wider context (1)

The ESNEFT strategy sits in the context of NHS national strategy and the STP plan

ESNEFT strategy

NHS 5Y FV

STP plan



Strategy in wider context (2)

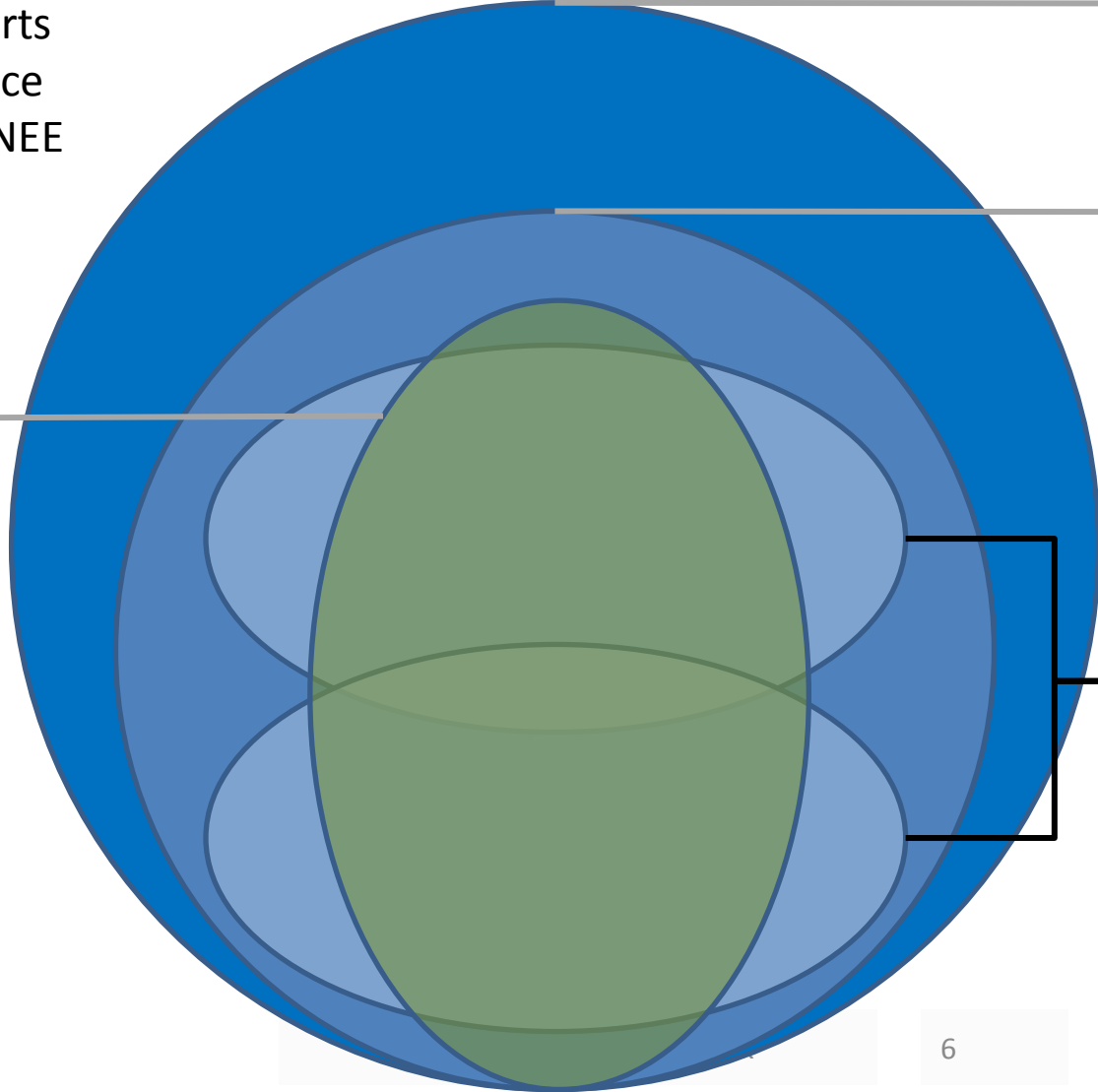
The ESNEFT strategy supports the local Alliance plans in IES & NEE

NHS 5Y FV

STP plan

ESNEFT strategy

Alliance plans



Strategy in wider context (3)

A pre-consultation business case (PCPB) will be developed for service reconfiguration options

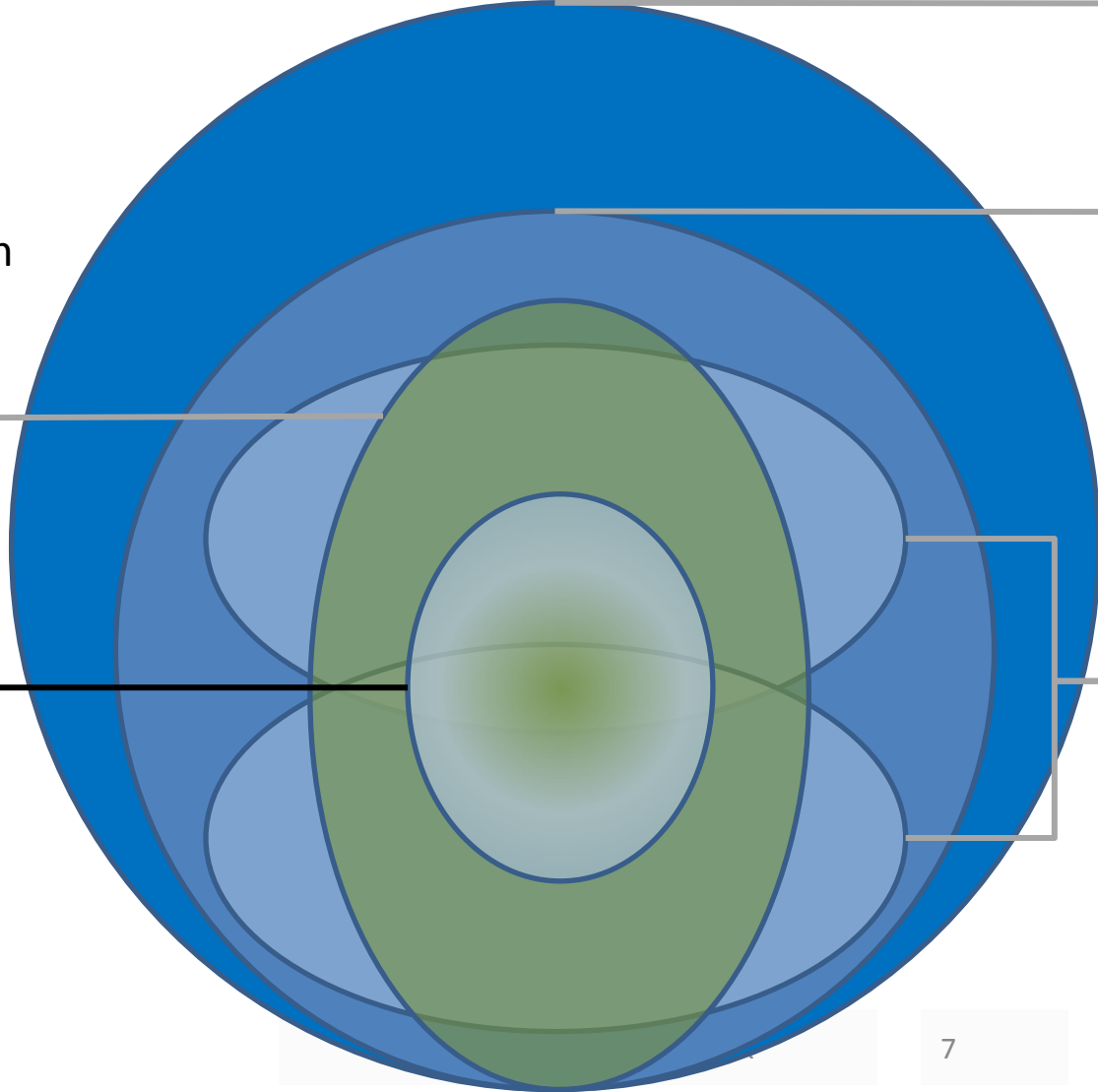
NHS 5Y FV

STP plan

ESNEFT strategy

PCBC

Alliance plans



Design principles for the approach

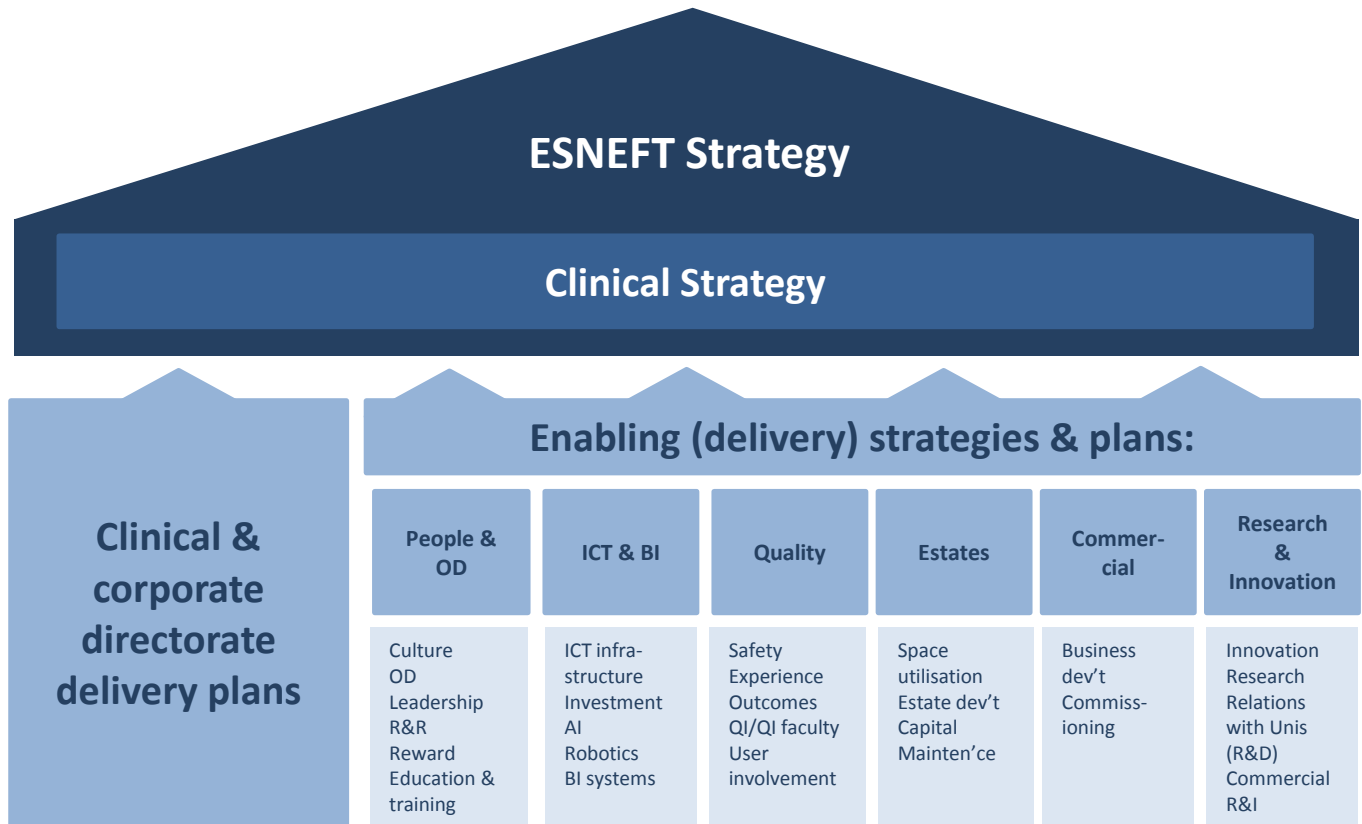
- ‘Leading’ strategies, ‘enabling’ strategies and delivery plans
- Clinically-led process “...form follows function”
- Patient benefits
- All focused on delivering the philosophy of “Time Matters” and reducing stress
- Regular engagement sessions with clinical and corporate teams throughout development
- Strategies will be developed collaboratively with the wider system plans and developed in partnership
- Evidence and good-practice based
- Will be measurable and outputs will include financial and workforce implications of change, which will inform the LTFP and annual plans for services



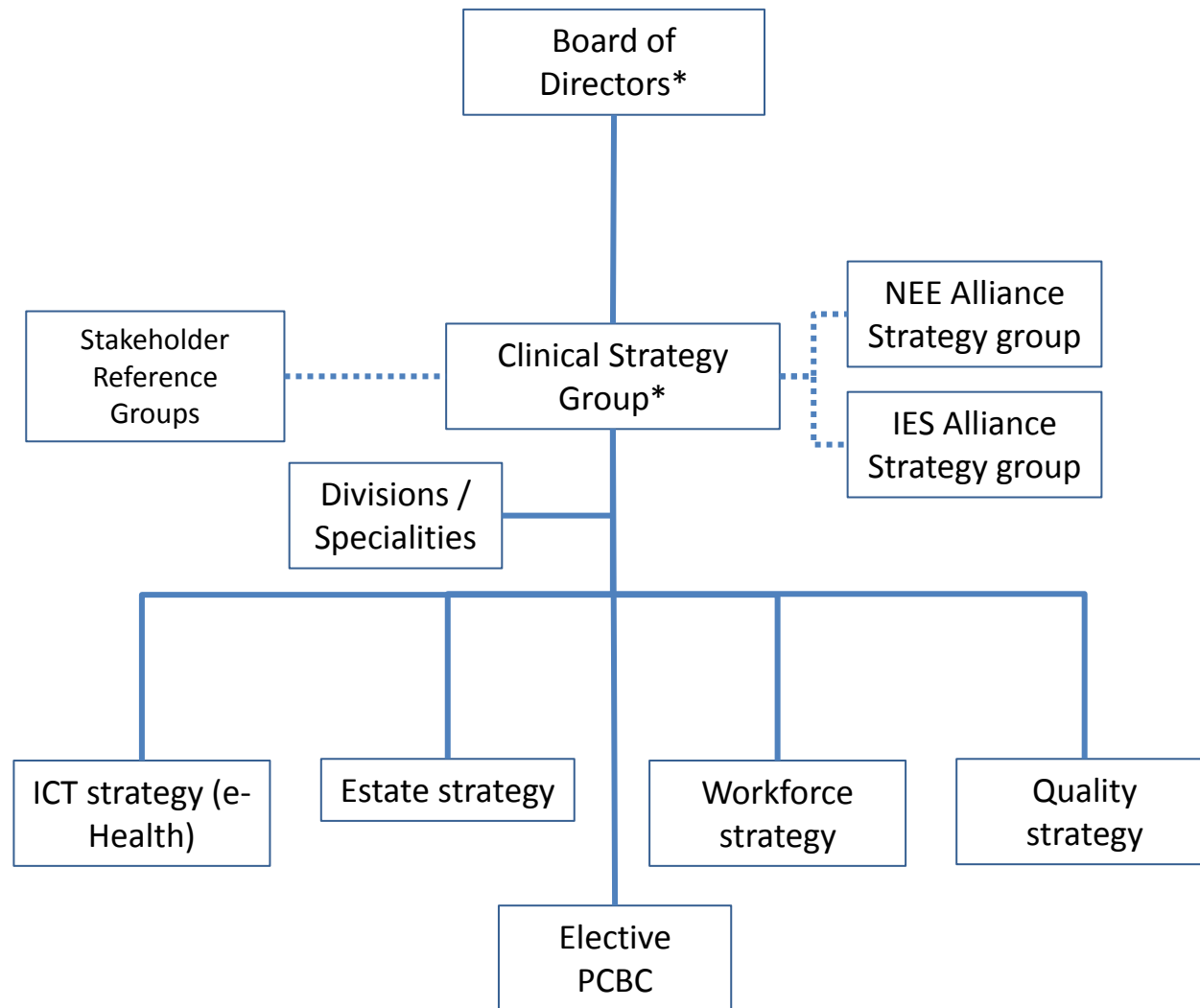
Strategy tiers and its delivery

Clear structure for articulating the **what** – i.e. strategy, and **how** – i.e. delivery plans

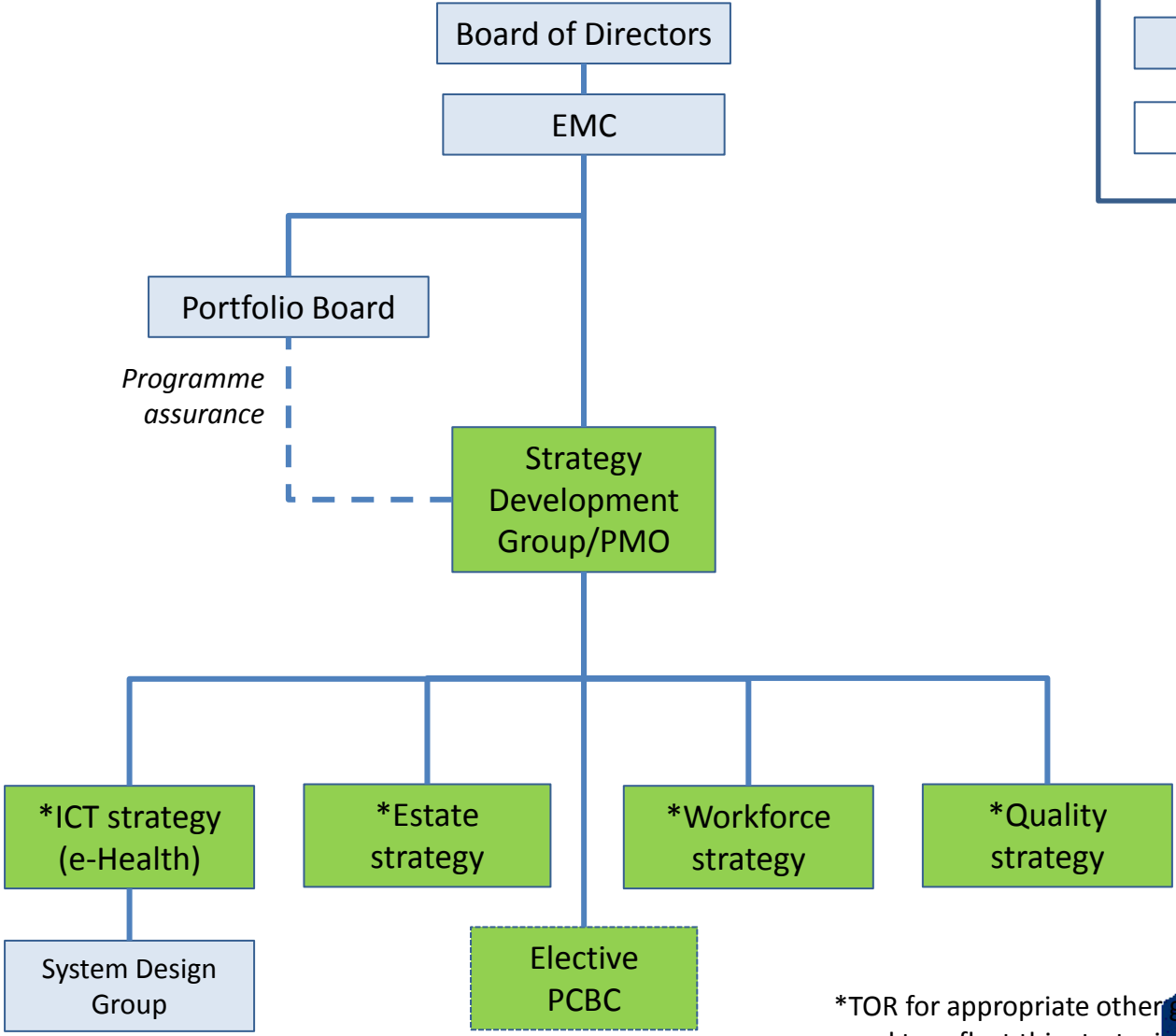
All aspects of strategy development will require some degree of financial modelling to support the measurement of benefits



Strategy content development



Programme Governance



*TOR for appropriate other groups will need to reflect this strategic focus



Programme Timeline (Trust strategy)

